


CARQUEST Electronic Parts Ordering Installation

Requirements

Mitchell 1 Manager/ManagerPlus version 5.8 or higher. Ideally, the shop should be using Windows 2000 or XP and the Network must have connectivity to the Internet. The Internet connection should be a broadband connection (dial-up can work if broadband is not available).

Medium

The ACL application must be installed on the workstation prior to configuring vendor. The catalog client installation files can be found on the Mitchell 1 Manager shop management system installation CD in the folder named Utils\ACL, the file name is ez2linksetup.exe. Each workstation has its own Serial Number in the ACL application. If the ACL application is already present on the system, open the application and click on the supplier information tab. This will reveal the serial number to use in Mitchell 1 Manager.



Functionality

Provides fast part lookups and ordering using category/sub-category, manual entry, part number and description look-up, keyword searches and Mitchell 1 labor.

Enabling CARQUEST Catalog Functionality

- The CARQUEST catalog functionality is turned on the drop down menu on the front screen.
- The CARQUEST catalog is accessed from the ACL button on the Order screen.

Vendor Setup

Installers wishing to use the CARQUEST catalog should call their local CARQUEST sales representative and tell them that they wish to be able to lookup and order parts over the Internet from their local store using CARQUEST Internet part catalog utilizing Mitchell 1 Manager.

The CARQUEST sales representative will obtain the proper credentials to enter into Mitchell 1 Manager or ManagerPlus

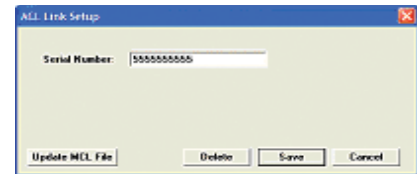


Mitchell1

Manager/ManagerPlus

How Do I Begin?

After creating a vendor record in Mitchell 1 Manager, click on the Setup Link button and choose 'Setup ACL Link'. Enter the same serial number found in the ACL application. (The catalog must be enabled before configuring the vendor link, see image to the right).



Mitchell 1 Manager linked vendor credentials only requires the workstations serial number.



Web Site: Mitchell1.com

Mitchell1
Shop Management Solutions